

# Program HLR4

## Instructions for installing the full HLR System

**NOTE:** The installation procedures described here-under were developed for the Windows XP/ VISTA/ WIN7 operating systems and may not work properly on other platforms. If you have any queries or if you experience installation problems contact George Sobol on (08) 8362 3177.

### CONTENTS

1.	Installing HLR to run in stand-alone mode	1
2.	Installing HLR to run off a Server	1
3.	Copying HLR onto another PC	2
4.	Configuring HLR after installation or copy	3
5.	Run-time problems & user support contacts	3

## 1. INSTALLING HLR to RUN in STAND-ALONE MODE

- 1.1 Use this procedure if you wish to install and run HLR on a stand-alone PC or laptop using the original installation CD. If the CD cannot be located you will have to use a supplied zip file or copy the system from an existing installation. In this case go to Section 3 below.
- 1.2 If you have a distribution CD insert it into the PC and activate Windows *Explorer*. Alternatively, select *My Computer* then double click the *CD drive* icon to display the contents of the disk.
- 1.3 Locate the file ***Install HLR4.bat*** and double click it to begin the installation (*Do not click Setup.exe*). Follow any instructions that may appear.
- 1.4 HLR will automatically install itself into the default folder: *C:\Program Files\HLR4*. Although there is no provision to vary the installation folder this can be done relatively easily after the program has been installed. Simply move the entire *HLR4* folder into another folder, subfolder or to the root C: level, then edit the ***Default.txt*** file and change the path specifications to suit.
- 1.5 To run the program locate the main executable file (called '***HLR4.exe***') in the *..HLR4* folder and drag a short-cut to the desk-top. Double click it to run the program.
- 1.6 To configure the system refer to Section 4 below. You may also need to refer to Section 5 if you experience run-time problems.

## 2. INSTALLING HLR to RUN off a SERVER

- 2.1 If you are installing a completely new system on a server refer to points 2.1 to 2.8 below. If you wish to simply add another PC to the network cluster refer to points 2.5 to 2.8 below.
- 2.2 **New installation on a server:** Install HLR onto either the server **or** one of the client PCs in accordance with the installation instructions given in Section 1 above. Note that it's not necessary to perform a full installation onto each client PC. If copying from a zip file or another system refer also to Section 3.
- 2.3 If you have installed HLR onto a PC (rather than the server) copy the entire HLR4 directory into the required target directory on the server then edit the *Defaults.txt* file on the server and change the directory path names accordingly. The installation on the PC can be deleted if you wish (unless it is to serve as a backup system in the event the network goes down).
- 2.4 It is advisable to keep the program files, database files and help files on the server. Consequently, the path specification for these locations in the *Defaults.txt* file will point to the relevant folders on the server.

- 2.5 On each client PC create a folder to store temporary and scratch files (e.g. C:\HLR\Tempfiles, C:\Program Files\HLR4\Tempfiles etc). Whichever location is chosen, ensure that the path to the ..\TempFiles folder is *identical* for each client PC and that it is faithfully reproduced in the *Defaults.txt* file on the server.
- 2.6 Alternatively, you may choose to create (or copy) the full program files to each client PC and institute a regular backup procedure whereby the server database files are copied back onto the PCs. In the event that the server goes down or becomes unavailable (for whatever reason) the user will still be able to perform an urgent HLR assessment. This backup/downloading procedure can be automated and be either performed at a set time during the week or whenever the database is changed.
- 2.7 Finally, create a shortcut on the client's desktop to the executable file **Hlr4.exe** that resides on the server.
- 2.8 Configure the system – refer to item 4. You may also need to refer to Item 5 if you experience run-time problems.

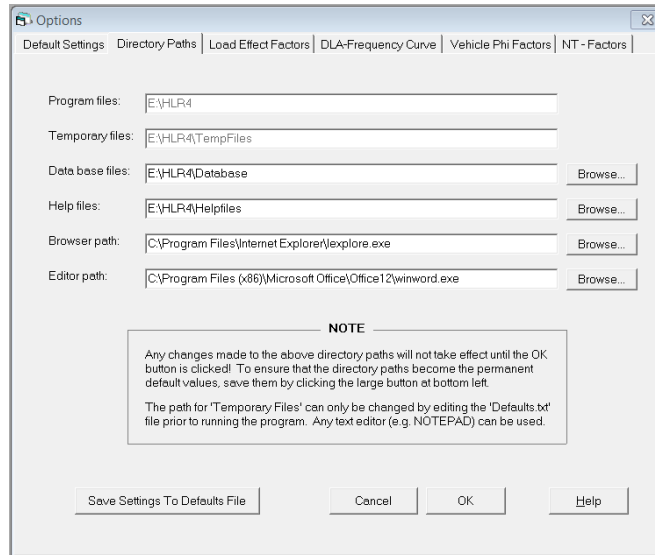
### 3. COPYING HLR TO OTHER PCs

- 3.1 HLR can be installed onto any other PC by simply copying all, or parts of, the HLR4 folder from one machine to the other (using, say, Windows EXPLORER).
- 3.2 To perform a full installation that includes all subfolders just copy the entire HLR4 folder from one machine (or server) onto the target PC. If HLR is on a server and you want to add another PC to the cluster, simply create an HLR folder on the PC, copy the “..\TempFiles” subfolder into it, then create a short-cut to the **HLR4.EXE** on the server. Note, however, the issues raised in points 3.3 to 3.7 below and in Section 4.
- 3.3 Once the copy operation has been completed ensure that the copied HLR folder and all subfolders have full read-write permission, particularly on WIN 7 or 8 computers.
- 3.4 When you first run HLR an error message indicating that a number of DLL or OCX library files are missing may be displayed. If this occurs you will need to install these files separately. Refer to items 3.5 and 3.6 below for instructions as to how this can be done. If this error message does not appear go to Section 4 below.
- 3.5 **Using the Installer in the HLR folder:** After you have installed HLR check the main folder (..\HLR4) for a file called “HLR Library Files Installer.exe”. If it exists, double click to run it and follow any instructions there-in. Note that the installation path can be any convenient folder or sub-folder (e.g., ../Temp, ../HLR, etc). The path you select is not important, since the library files are installed into the Windows OS folders. If this installation file does not exist refer to point 3.6 below.
- 3.6 **Downloading the library files from the web.** Go to the ACES website at [www.aces-systems.com](http://www.aces-systems.com) and navigate to the HLR page via the link at the bottom of the ACES home page. Scroll down to the section labelled “Additional Windows Library Files” and download the library file installer as per the instructions there-in. Save it to the ..\HLR folder on the PC or server.
- 3.7 Once you have downloaded and saved the library file, double click to run it and follow any instructions there-in. Note that the installation path for the library files can be any convenient folder or sub-folder (e.g., ../Temp, ../HLR, etc). The path you select is not important, since the library files are installed into the Windows OS folders. Refer also to Sections 4 and 5 below.
- 3.8 **Configure the system:** You may have to configure HLR to run on the new PC or server. Refer to Section 4 below.

## 4. CONFIGURING HLR

4.1 Once the program has been activated a number of defaults and settings can be modified to suit your own environment and operating requirements.

4.1 **Setting Subfolder Path Specifications:** Although it is advisable to keep the program files, database files and help files on the server the location of these can be changed to suit your needs. The path specification for these locations are stored in the *Defaults.txt* file in the main *..HLR* folder. The path specification to the database can be selected via the “*Options/Directory Paths*” tab (see below):



4.2 **TempFiles folder:** Note that if the program files are located on a server (with a short-cut on each client PC pointing to the *HLR4.EXE* file) the temporary files directory must point to the *..\Tempfiles* folder on the client PC. This path spec must be identical for all PCs connected to HLR. This should be done before you first run the program.

4.3 **Security Settings:** To change the *Username* for the authorised database administrator and to change, or add, users having database edit authorisation, select *Options / Security Settings* from the top menu bar and enter the required user names into the appropriate fields. Note that only one database Administrator is allowed to perform this action. Usernames entered into this dialog box will be checked by HLR against the username encoded into the client's PC. If they are different the user will not be permitted to save any changes to the structure, route or link data. *Note that authorisation is not required to run assessments or to view the database – only to edit the database.*

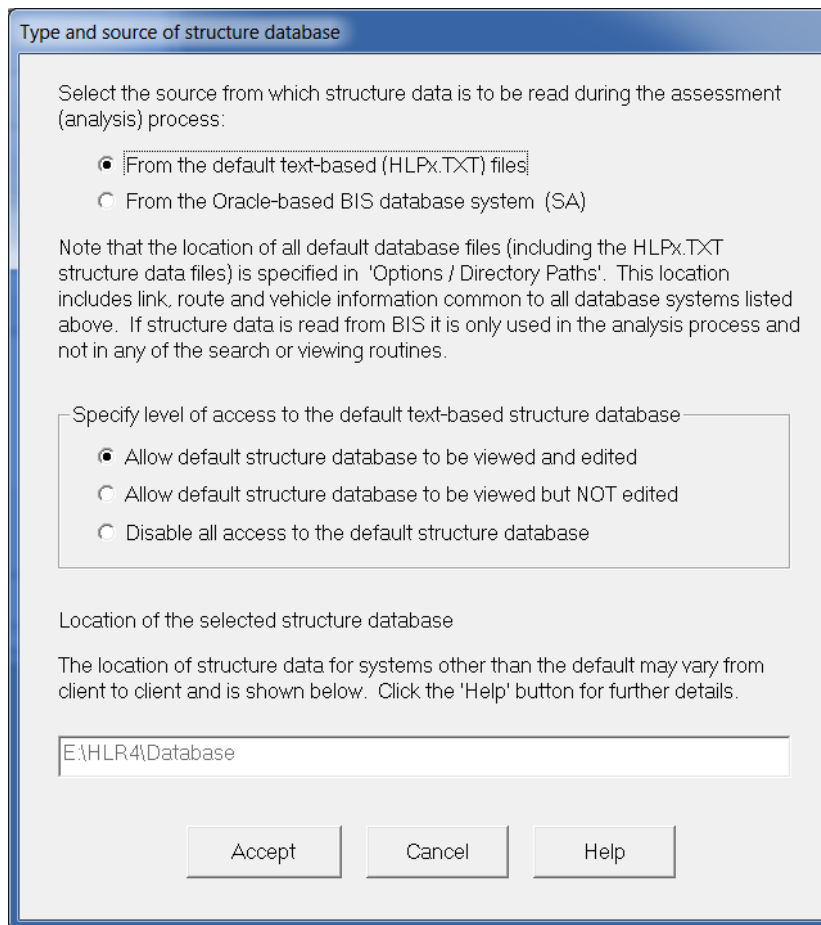
4.4 **Default Word Processor:** HLR uses Microsoft *WORD* as the default report editor. To change the editor select *Options / Directory Paths* from the top menu bar then enter the required path specification. Refer to the screen image above.

4.5 **Default User Guide and Report Viewer:** The on-line User Guide and many of the reports are all produced in HTML format. HLR uses Microsoft *Internet Explorer* as the default help file and report viewer and printer. To change the browser select *Options / Directory Paths* from the top menu bar then enter the required path specification. Refer to the screen image above.

4.6 **Factors & Parameters:** A range of factors and system parameters can be changed and saved to the defaults file viz: *Load Effect Factors*, *DLA-Frequency curve*, *Phi Factors* etc. Select *Options* from the top menu bar then the required option from the drop-down submenu.

4.7 **Customise Summary Restrictions Report:** The *Summary Report* in the **Reports** tab is in *WORD* format and allows a formal report of all restricted bridge structures to be printed. As a consequence the report is fully editable. All report headings can be customised by accessing “*Options / Summary Report Headings*” from the top menu.

- 4.8 Set Structure Database Location and Type:** The database administrator can set the source from which structure data is to be read during the assessment (analysis) stage and the level of access to be granted to users to the default (text-based *HLPx.TXT*) structure files. This is done by selecting “*Options / Type and source of structure database*” from the top menu line.



## 5. RUN-TIME PROBLEMS

- 5.1 Database Path Settings:** If data is not being loaded from the structure (or vehicle) databases or the databases cannot be opened, check the path settings in the *Defaults.txt* file and ensure that all subdirectories exist or have been correctly specified. Click onto the menu item *Options / Directory Paths* to view and modify path settings or edit the the *Defaults.txt* file manually.
- 5.2 Saving Problems:** If data cannot be saved to parts of the database or to the temporary directory (*..\TempFiles* folder) check that these subfolders (or files within the subfolders) are *not* marked as *Read only*. Change the attribute if they are (i.e., set all permissions to *Read and Write*).
- 5.3 Report Viewing Problems:** If reports and/or help files cannot be viewed through the web browser or *MS WORD*, check that the path names in the *Defaults.txt* file pointing to these applications have been correctly specified. Click onto the menu items *Options/Directory Paths* to view and modify path settings settings or edit the the *Defaults.txt* file manually.
- 5.4 System & File Error Messages:** If a system message appears that a Visual Basic DLL or OCX library file is not available you will have to install additional HLR library files onto the PC. Refer to Sections 3.4 to 3.6 above for instructions as to how to do this.
- 5.5 Technical Support Contact Details:**

George Sobol    Ph:    (08) 8362 3177  
                     Mb:    0404 515 085  
                     Email: aces@internode.on.net